

Nokia Customer Care
RH-51/RH-52 Series Cellular Phones

**5 – Disassembly and Assembly
Instructions**

[This page left intentionally blank]

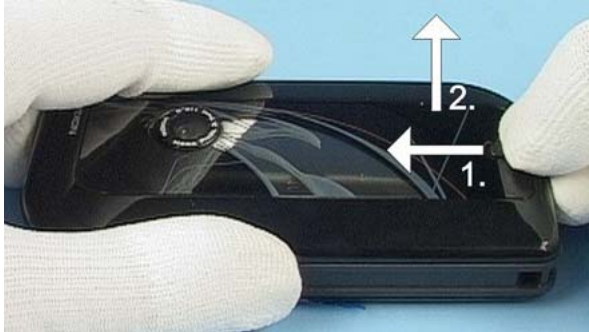
Table of Contents

	Page No
Disassembly instructions.....	5
Reassembly procedure.....	9

[This page left intentionally blank]

Disassembly instructions

(See also videos in Care Point.)



Push the C-cover lock to the left before pulling up the C-Cover.



Lift the topside of the A-cover and then remove it carefully.



Remove the keymat.



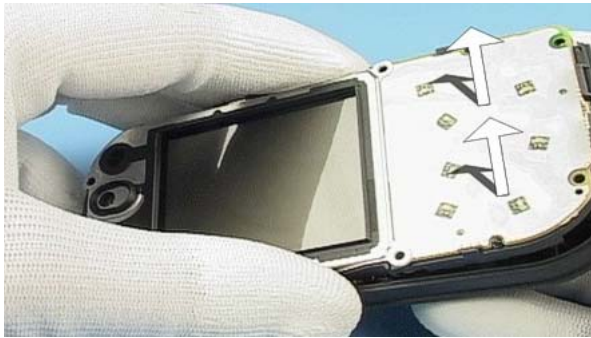
Unscrew the six Torx Plus® size 6 screws. **For assembly, the reverse order and a Torx Plus® driver with a torque of 22Ncm has to be used.**



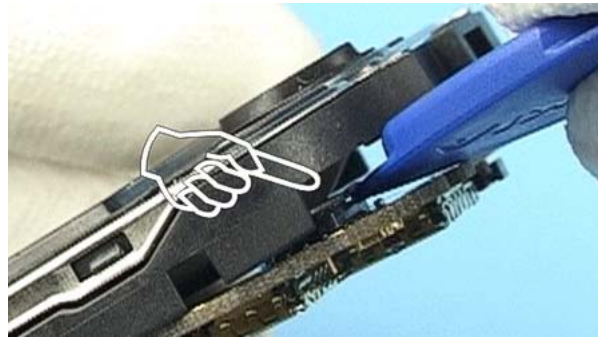
Use SRT-6 to remove the IHF-lid.



Protect the camera window with a film.



Separate the engine from the B-cover.



Open the LCD connector with SRT-6 carefully.



Use a slotted screwdriver to unlock the snaps of the LCD top shield assy on both sides.



Now, the LCD top shield assy can be removed.



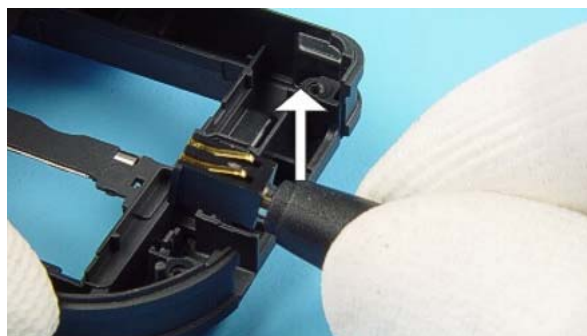
The LCD module drops out when turning the UI-frame.



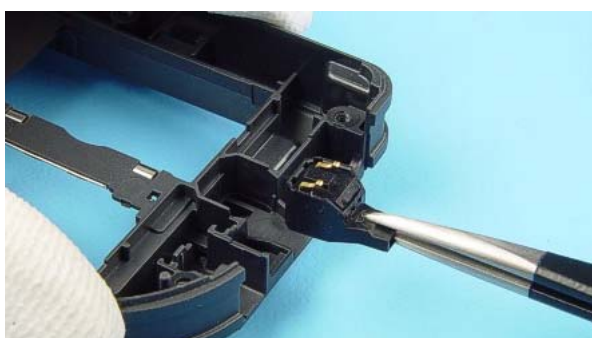
Protect the LCD module with a film.



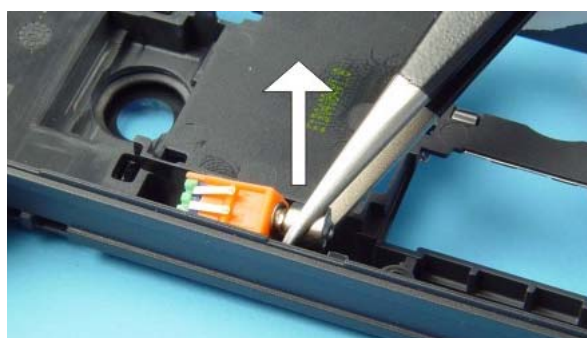
The earpiece can be removed from its guidance by pushing with TORX screwdriver through the B-cover.



Remove the DC-jack by using a DC-plug.



Use tweezers to remove the microphone.



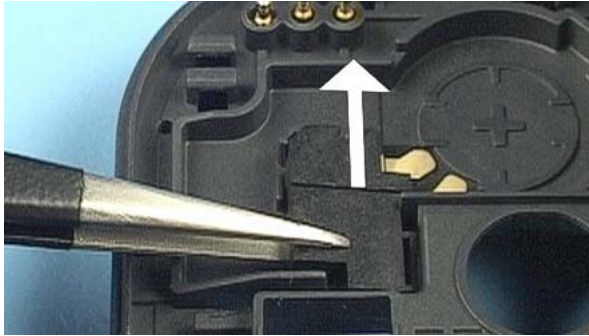
Remove the vibra motor.



Lock out the snaps of the IHF lid carefully.



Turn the B-cover as shown in the picture and remove the IHF lid.



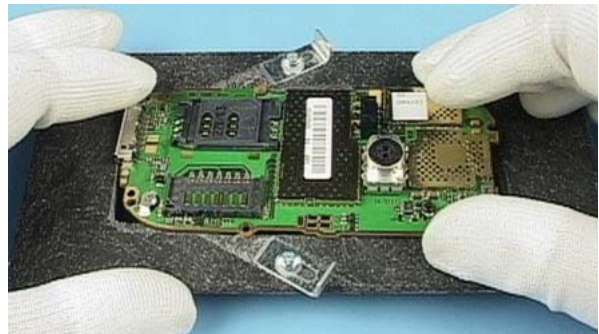
Take away the SM conn (IHF speaker connector) by using tweezers.



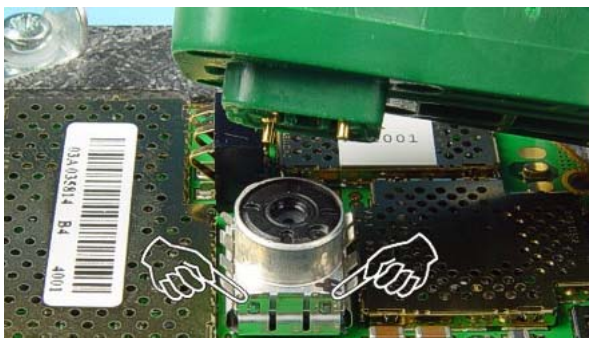
Remove the IHF speaker.



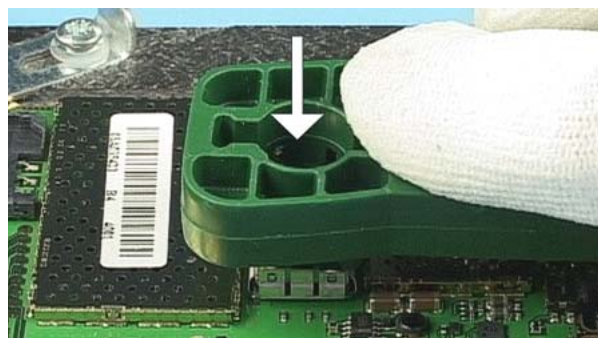
Remove the power key.



Use RJ-22 when exchanging the camera module.



The camera module can be removed by pulling up the removal tool. Please note the right position of the guiding snaps for re-assembly.



Press down the SS-15 firmly to open the metal feathers.



Now, the camera module can be taken away.

Reassembly procedure

Reassembly takes place in reversed order compared with disassembly.

[This page left intentionally blank]